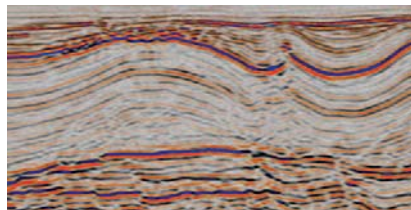
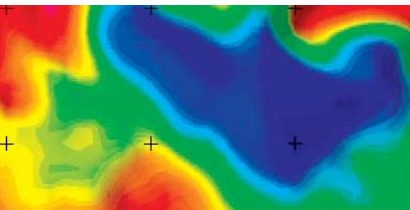
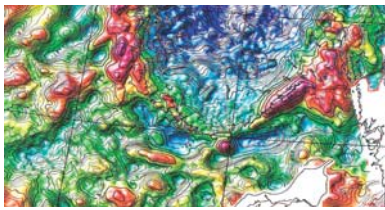




AIRBORNE
Petroleum Geophysics



Qualified for Success



COMPANY OVERVIEW

AIRBORNE PETROLEUM GEOPHYSICS LTD (APG) provides specialized geophysical products and services to the oil and gas industry. Founding members Dr Andy Gabell, Dan Olson, Arkady Shabanov and Helen Tuckett through their widely respected Canadian Micro Gravity Ltd company have developed the advanced GT-2A airborne gravity system in conjunction with their partners Gravimetric Technology based in Moscow. They have combined forces with Richard Horscroft to offer through APG a unique blend of operational, technical and interpretation skills based on decades of experience within the oil and gas industry. The APG team's in-depth understanding of the needs of energy companies enables it to offer a start-to-finish customized service which is based on addressing specific objectives and solving geotechnical problems.

APG is uniquely a service provider, technical partner, data provider and consultancy involved in:

- Proprietary and multi-client geophysical projects
- Gravity, magnetics, electromagnetics, radiometrics, remote sensing
- Airborne, land and marine survey operations
- Training courses plus technology transfer initiatives
- Seismic and non-seismic data interpretation studies
- Regional exploration with basin-wide reconnaissance surveys
- Prospect mapping with pre-seismic operations and block-specific surveys
- Risk mitigation studies using surveys to detect salt, shale, volcanic and igneous rocks
- Joint ventures

EXPLORATION PARTNERS

The use and interpretation of gravity, magnetic, and electromagnetic data is a specialized skill. Working side-by-side with exploration geoscientists as an Exploration Partner allows APG to better support the use of data by oil companies and ensure maximum interpretation value through:

- Gravity, magnetic, EM feasibility studies with fit-for-purpose modeling
- Survey design and technical parameter assessment
- Seismic and non-seismic data integration studies
- Resolving ambiguities in seismic data processing and interpretation
- Basin analysis: basin morphology, structure and depth
- Crustal thickness and source rock maturity studies

APG's in-depth understanding of the needs of energy companies enables us to offer a start-to-finish customized service.



APG is uniquely a service provider, technical partner, data provider and consultancy equipped with broad geotechnical expertise.

RAISING THE STANDARD

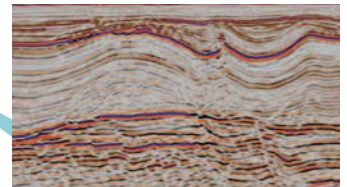
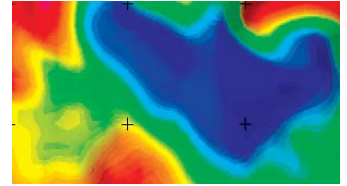
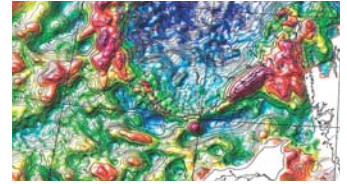
APG's unique **GT-2A** airborne gravimeters are the latest in the line of successful dynamic gravity systems designed and manufactured by the award-winning gravimetric technologists Yuri Smoller (Chief Engineer) and Sam Jurist (Chief Scientist). These distinguished scientists received Russia's top award for science and engineering from Boris Yeltsin in 1995 for their work in mobile gravimetry. The GT-2A, introduced in 2008, is based on 7 years of operational experience with its successful predecessor, the GT-1A.

"With a proven record for quality and reliability, and with consistent performance and fully automatic operations for mobile gravimetric measurements, the GT-2A is truly state-of-the-art technology."

The GT-2A has significant enhancements, including increased sensitivity and a wider dynamic range which allows more precise measurements and reliable performance in periods of high turbulence. The GT-2A offers:

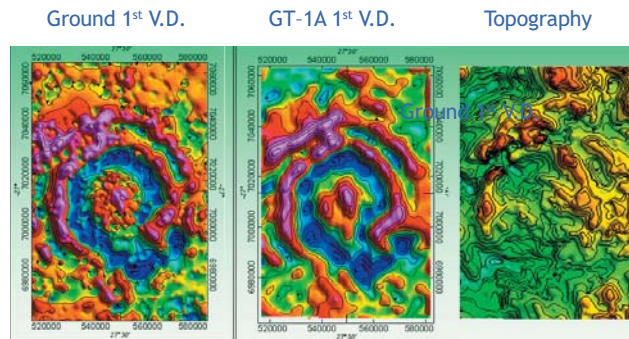
- Aircraft-independent operations
- Fully automated recording
- In-field Quality Control
- In-field production of preliminary free-air gravity maps

Data collected by the GT-2A is monitored daily for adherence to strict internationally recognized QC standards for airborne gravity measurements. In-field QC is fundamental to delivering the highest fidelity data. APG implements a dedicated "open door" Quality Control procedure on all of its projects by utilizing independent QC specialists and an array of data QC indicators.

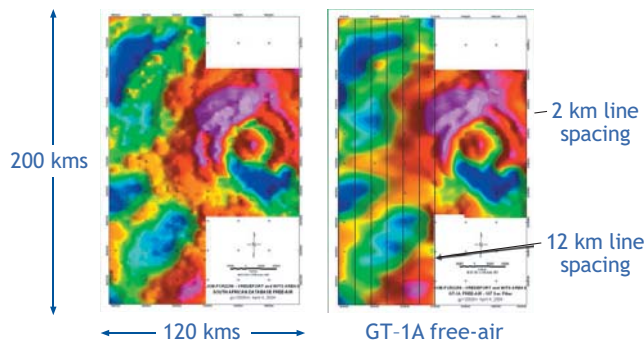


AIRBORNE GRAVITY SURVEY

Vredefort Dome,
South Africa
Fixed-wing GT-1A Survey
First Vertical Derivative



Vredefort Dome,
South Africa
Fixed-wing GT-1A Survey
Free-air Gravity



DO YOU HAVE ANY QUESTIONS?

- Seismic, gravity, magnetic, or EM data?
- Vertical gravity meter vs. gravity gradiometer?
- Can I resolve my target structure?
- What acquisition parameters should I use?
- How can I optimize my seismic budget?



CONTACT US

Airborne Petroleum Geophysics Limited
9 Allaura Blvd, Unit 1
Aurora, Ontario L4G 3N2

Tel: +1 (905) 727-8886
Fax: +1 (905) 727-8845

Email: info@apgeophysics.com

For online support, visit www.apgeophysics.com

Toronto | Houston | Perth | Moscow | Singapore

INDEPENDENT CONSULTATION

For an independent consultation, contact AGP directly and reach Mr. Jim Peck for seismic interpretation or Mr. John Bain for g/m interpretation.

INDEPENDENT SYSTEMS VERIFICATION

For an expert, accurate and impartial view of the APG GT-series gravity systems, APG is pleased to refer you to an independent Quality Control specialist who has analyzed data for a number of oil companies.

HSE STATEMENT

APG recognizes its moral and legal responsibility to provide a safe and healthy working environment for its employees, contractors, and subcontractors and for its community. APG operates under authorized HSE policy worldwide.

AFFILIATIONS



Accredited and Certified Member of International Airborne Geophysics Safety Association (IAGSA)



Corporate Member of Society of Exploration Geophysicists (SEG)